

What's Going On?

Checking In

Minds on

Which Tool?

Action!

Applying the Trig

Consolidation

Choose Your Own Adventure

Learning Goal - I will be able to use trigonometry to solve real-world application problems.

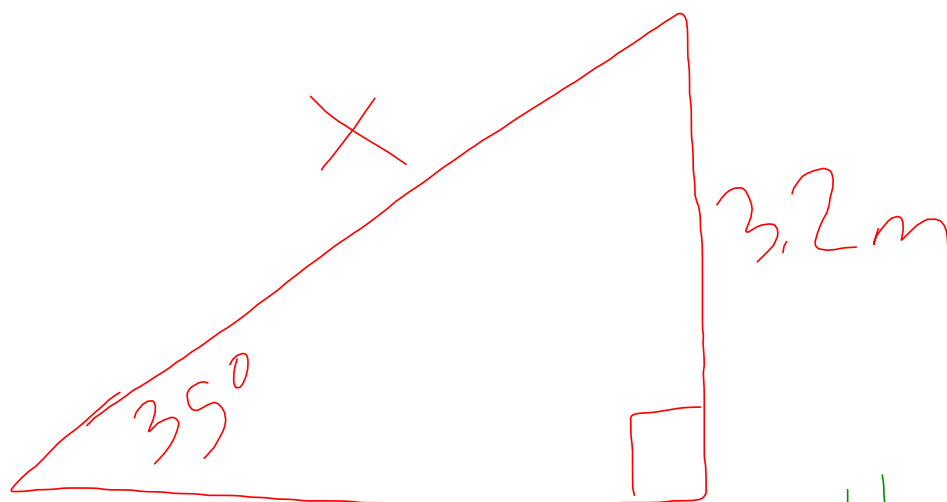
Minds on

Which Tool?

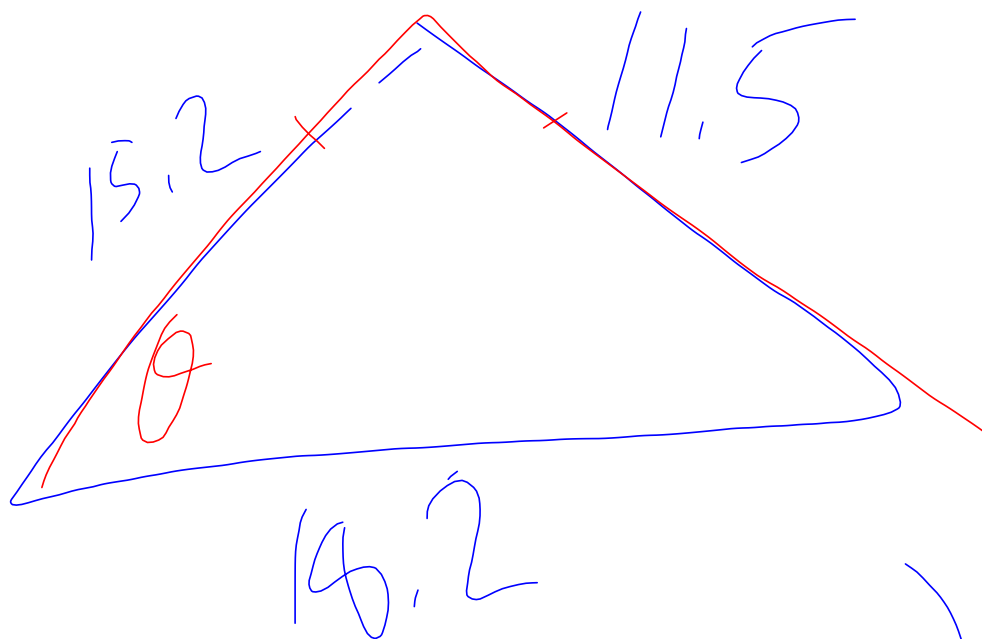
Create a situation where you would use each of our trigonometric tools.

Include a sketch and an explanation of when you use each tool.

sin



Use sin when you are dealing with the opposite & hypotenuse; looking for a side.



$$C = \cos^{-1} \left(\frac{a^2 + b^2 - c^2}{2ab} \right)$$

Action!

Applying the Trig

The key to any application is a good diagram!

Be sure to include all information you know and any information you can easily find.

Then, decide which tool(s) you need.

You will often need to use several tools to solve an application problem.

Consolidation

Choose Your Own Adventure

Create a real-world (ish) situation / question that can be solved using trigonometry. Be creative!

Your question must include at least one non-right triangle!